

4 pohledy na Josefovské údolí.
Na 2 detailních záběrech je Jo-
sefovská huť belgického typu.



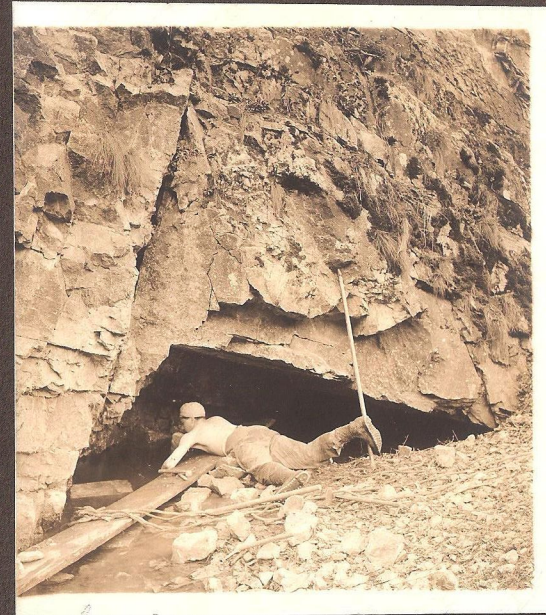
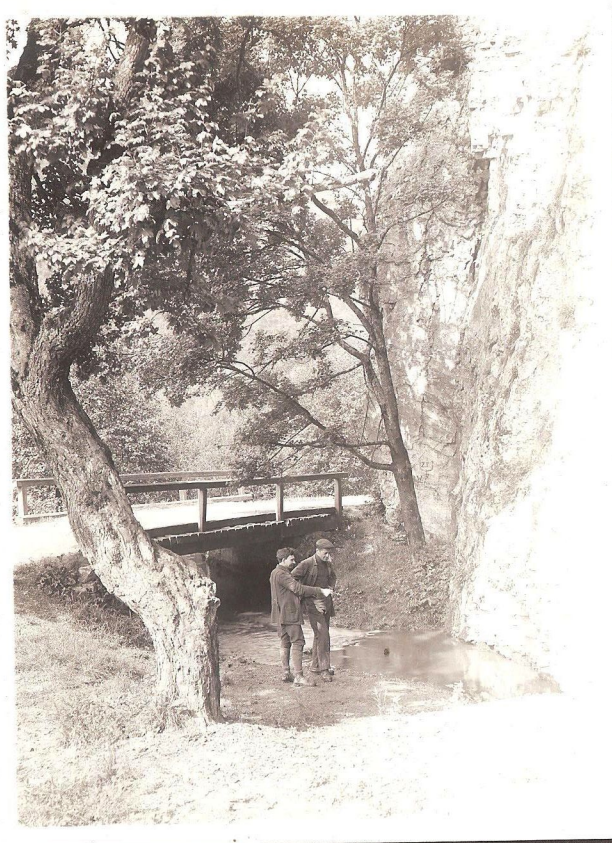
Býčí skála



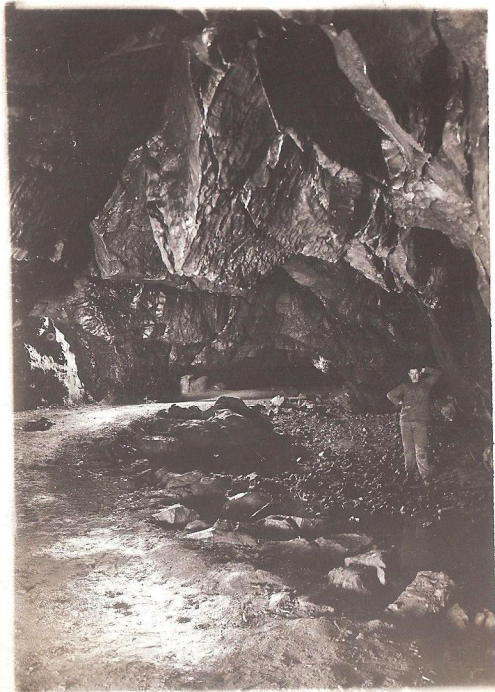
Krkavčí skály



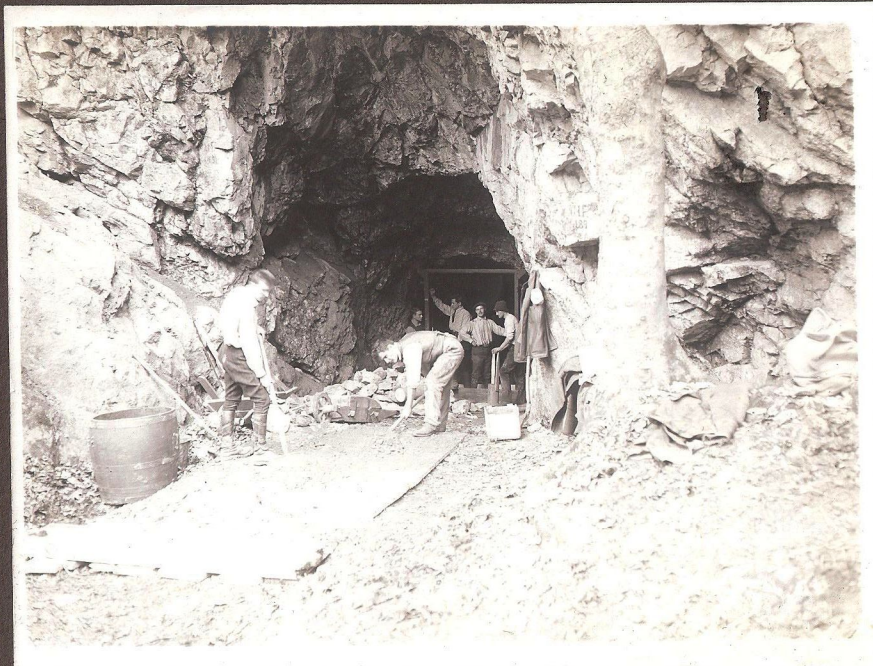
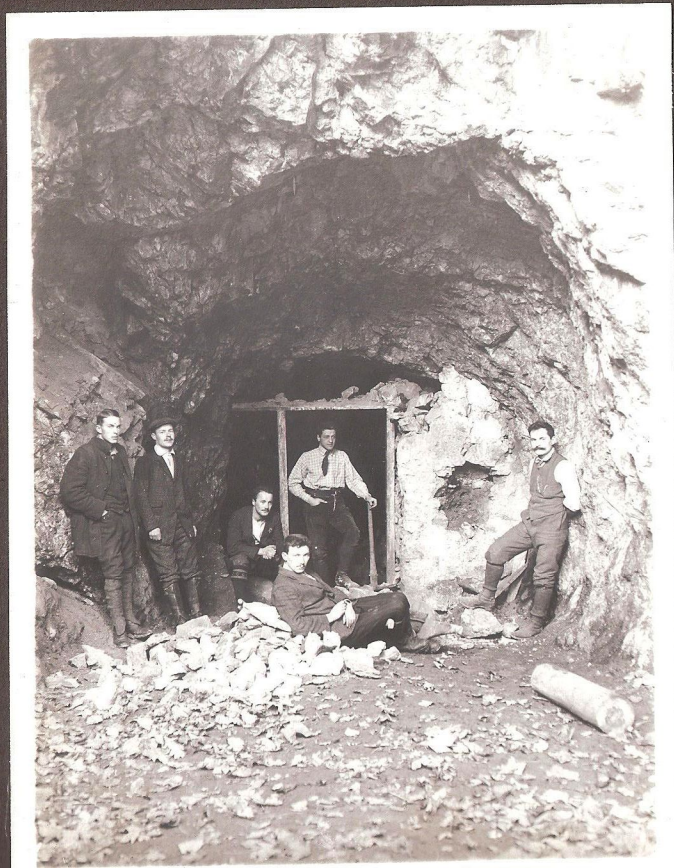
2 pohledy na skalní stěny
nad vývěry Jedovnického potoka



doprava na pracoviště
2 pohledy na vývěry Jedovnického
potoka



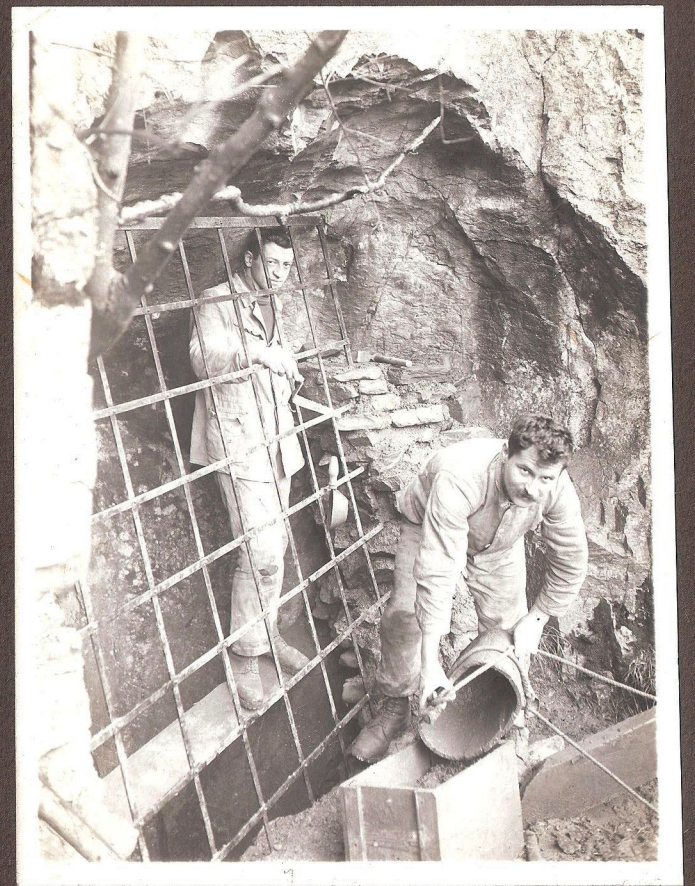
Býčí skála
- pohled do chodby
- zdolávání kolmého stupně
v Bruně



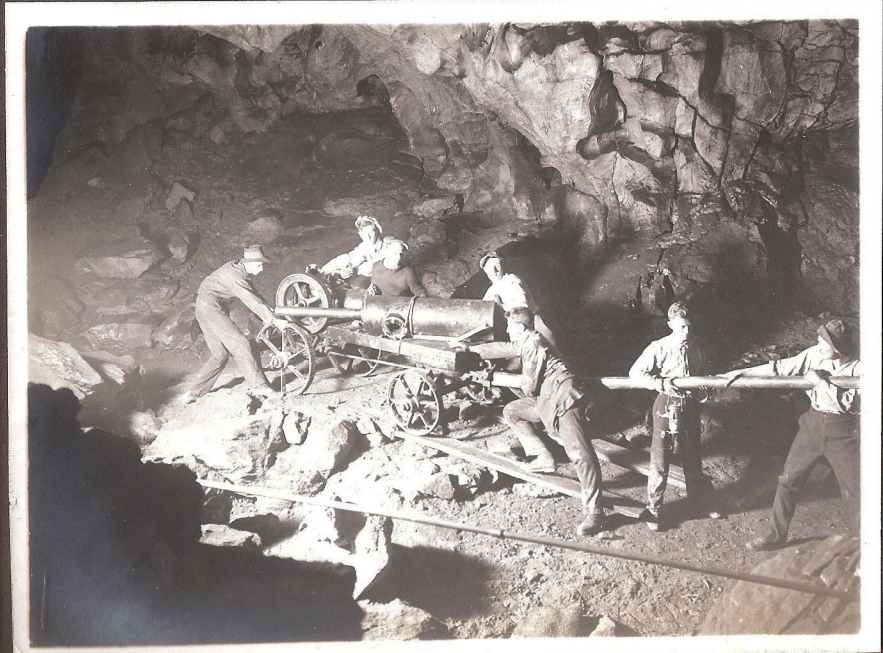
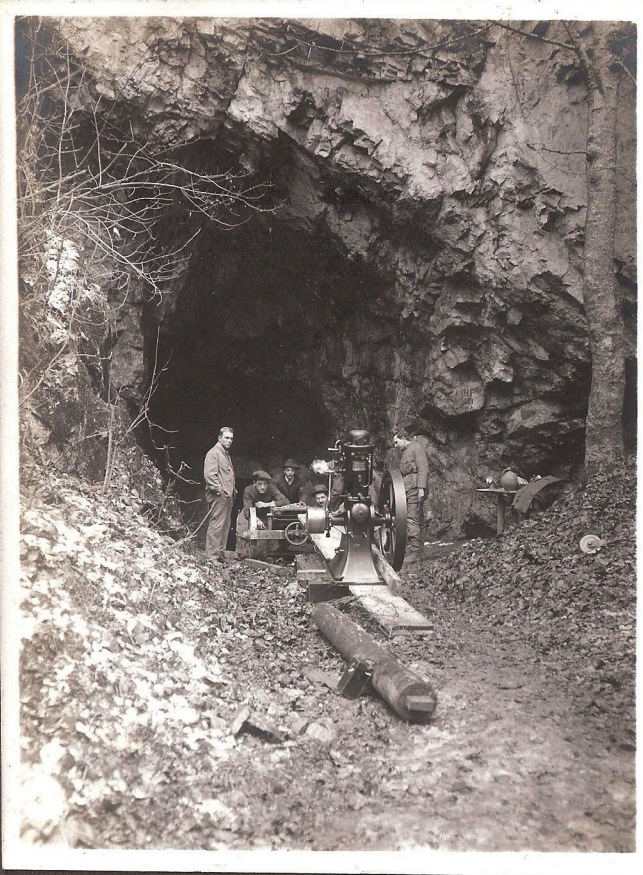
stavební práce při uzavírání
vchodu jeskyně Býčí skála



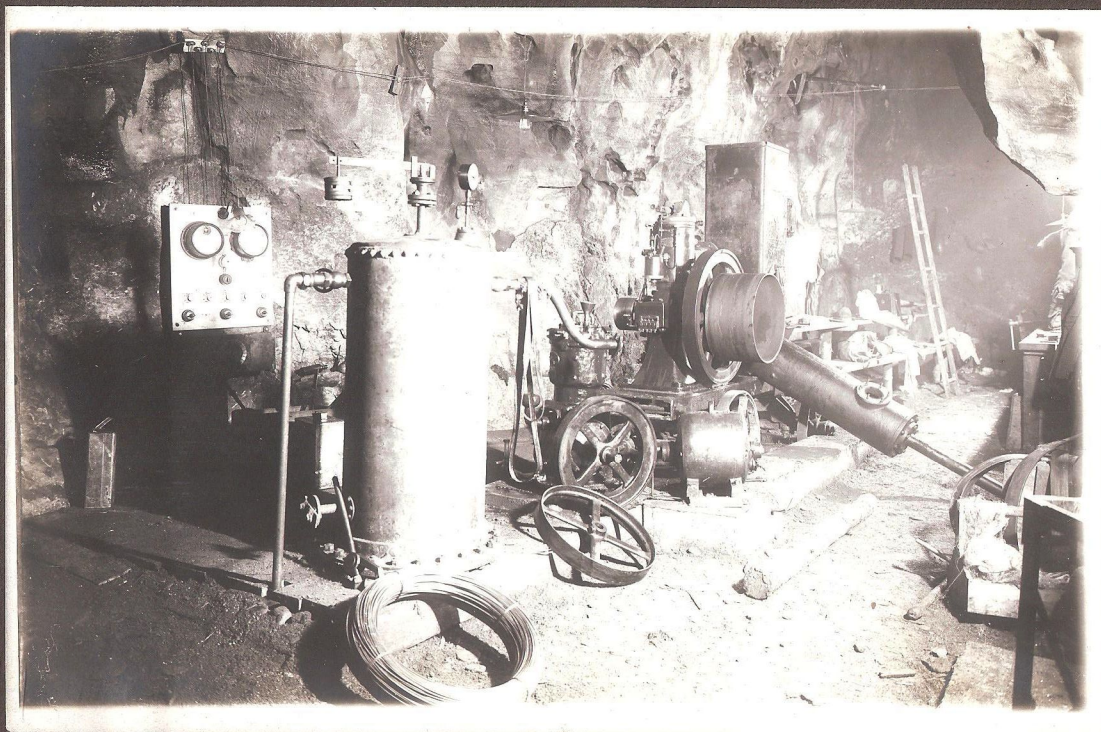
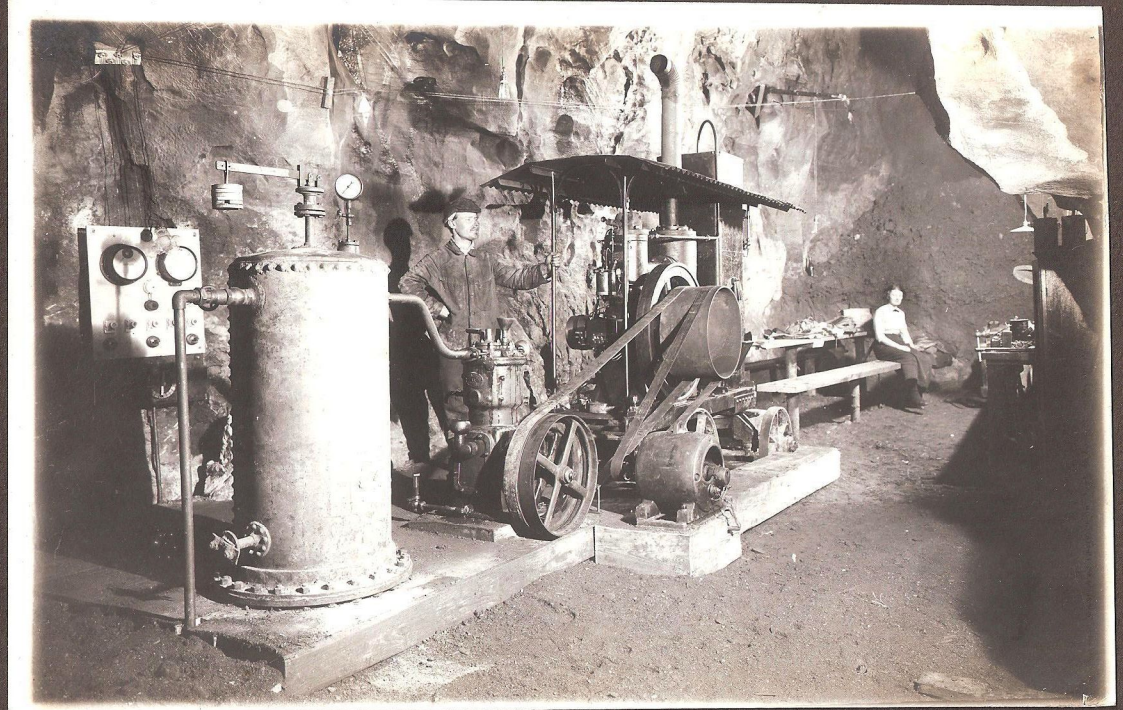
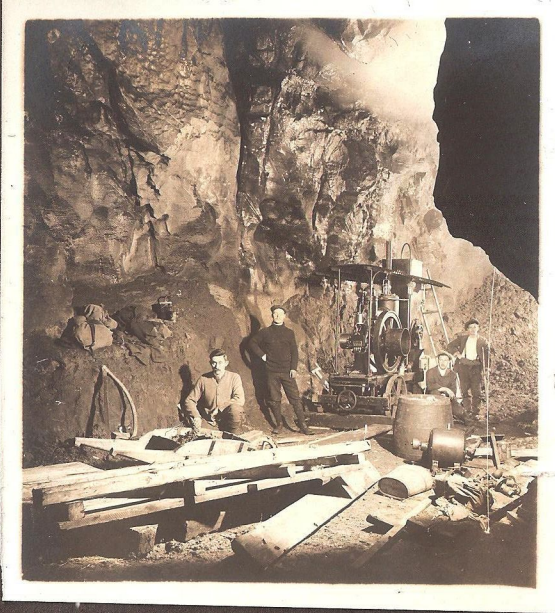
instalace rámu vchodové mříže



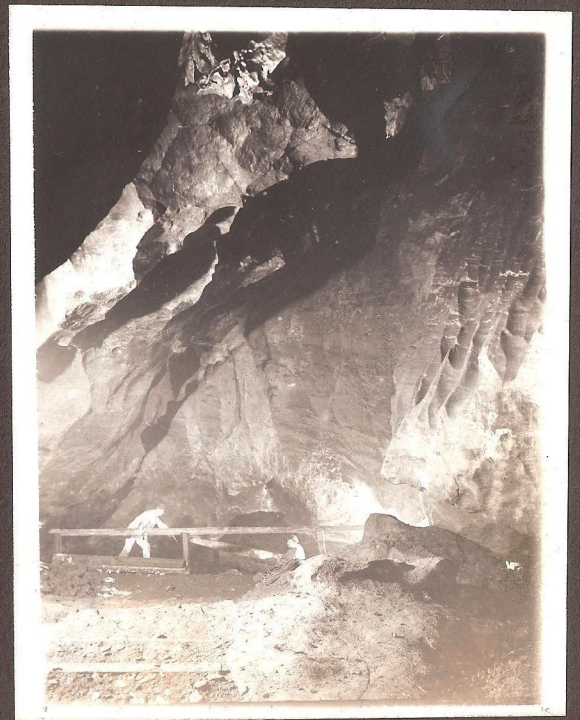
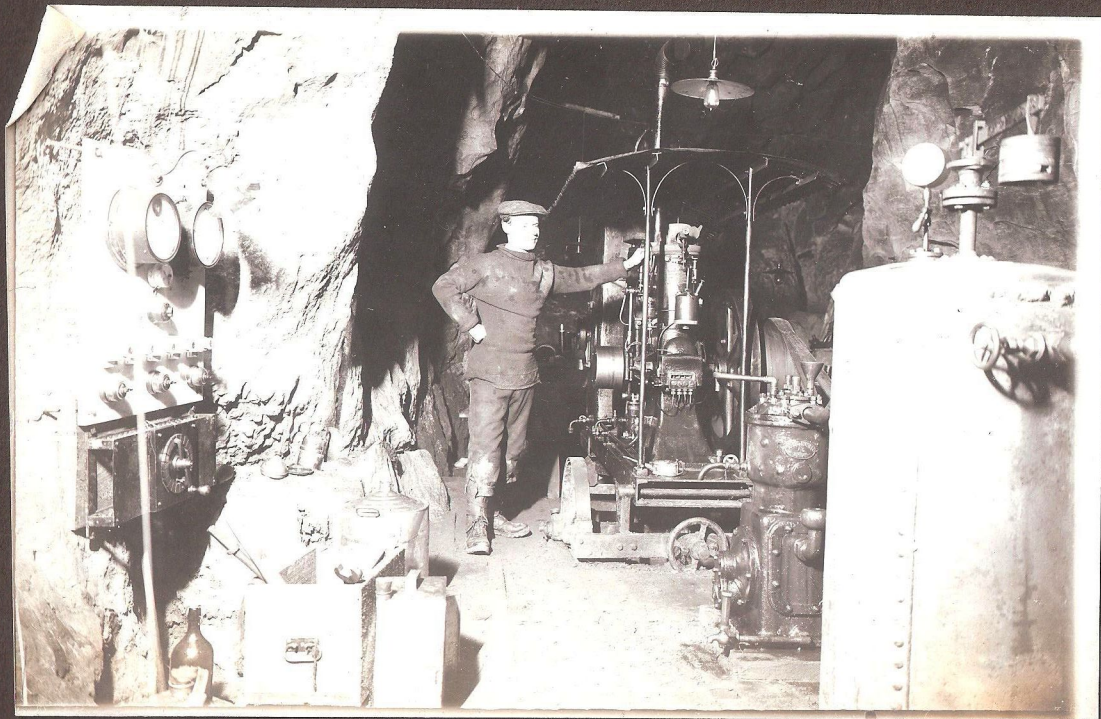
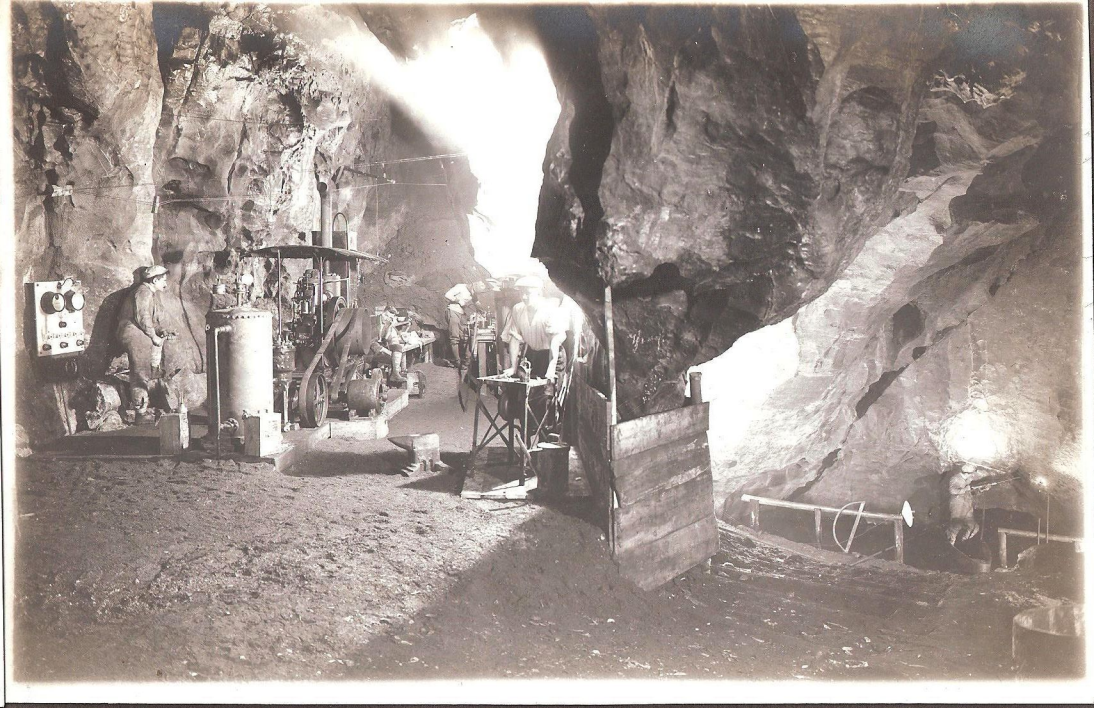
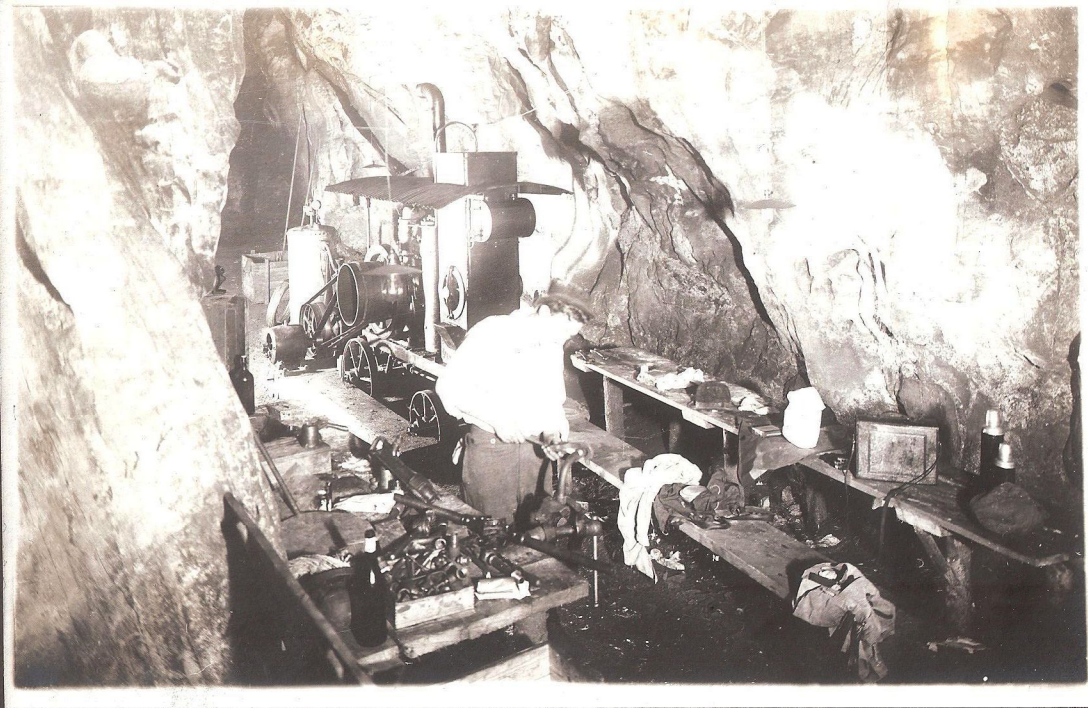
2 pohledy na instalaci mříže
do okna Býčí skála

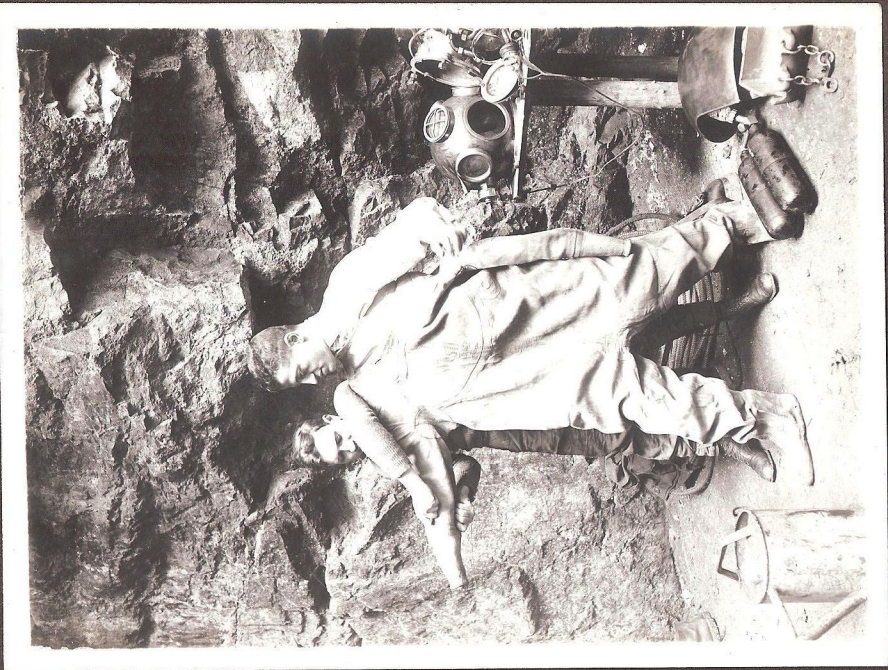


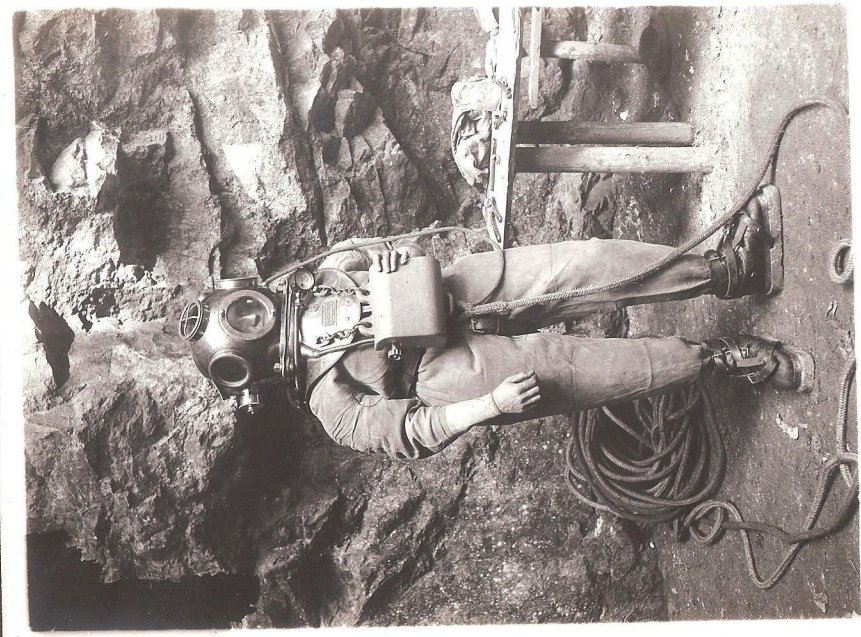
doprava dieslova motoru a kom-
presoru do prostoru Prstu
u Genkova sifonu

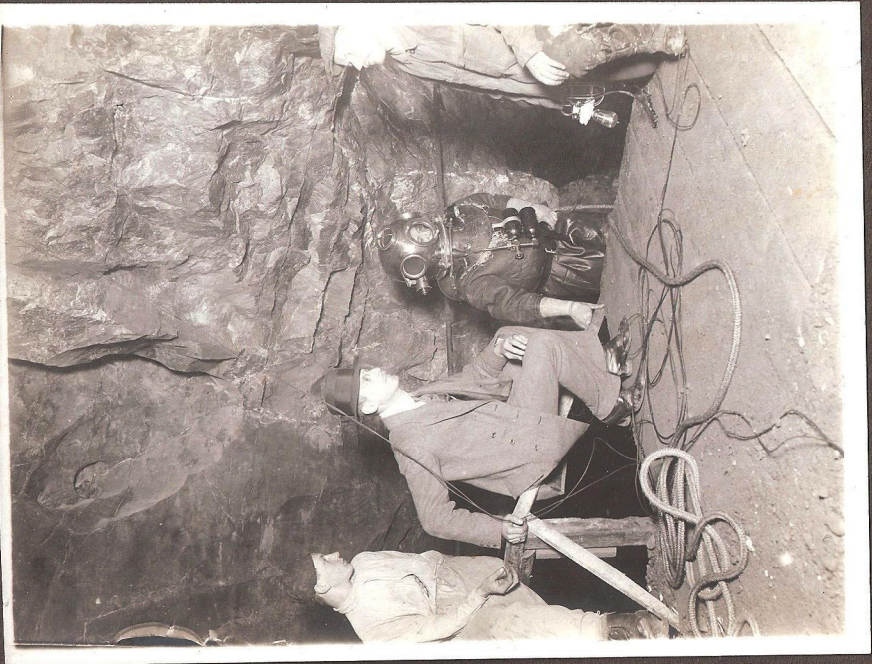


instalace strojního zařízení
v odbočce Prst u Šenkova sifonu

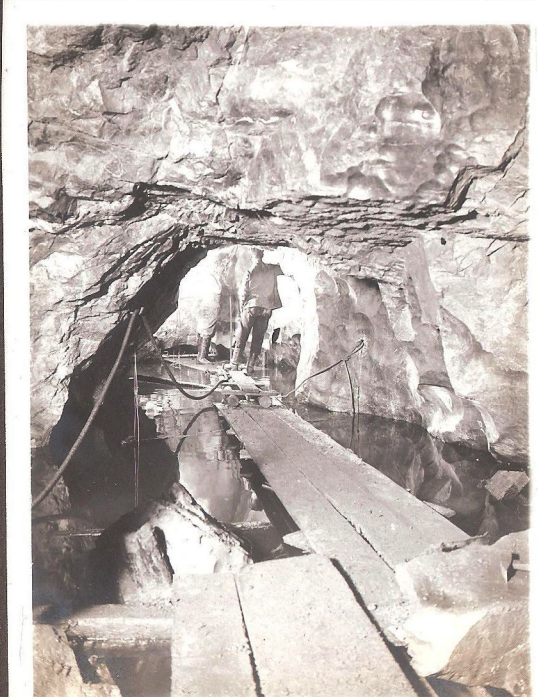
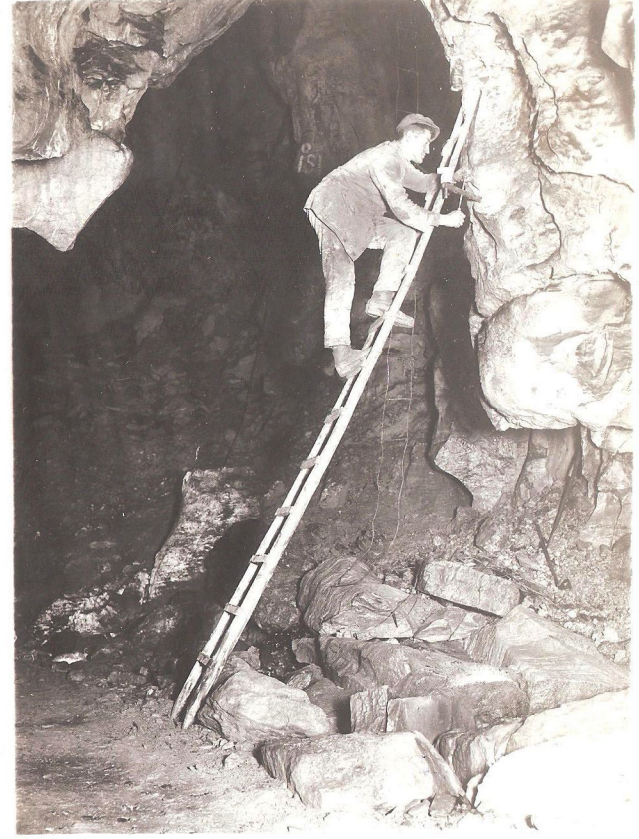
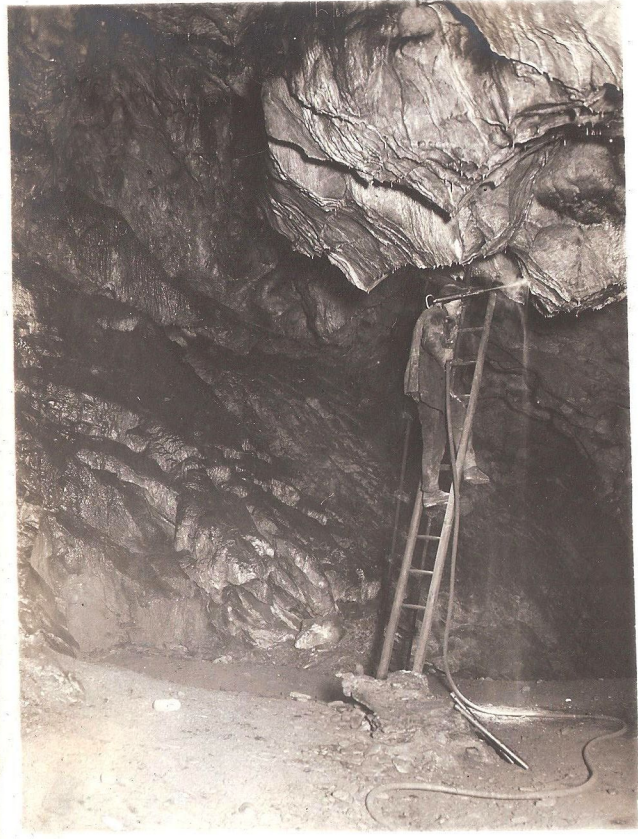










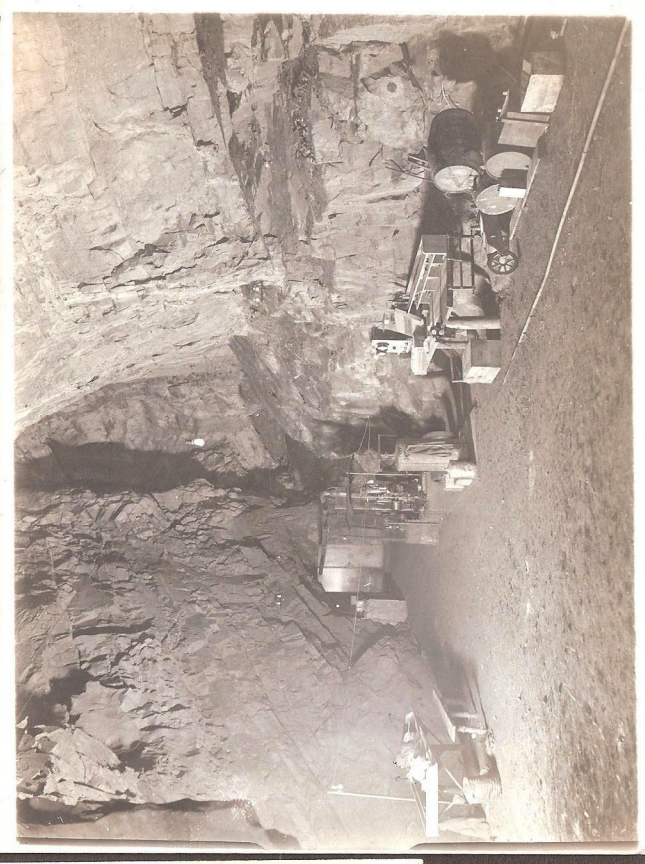
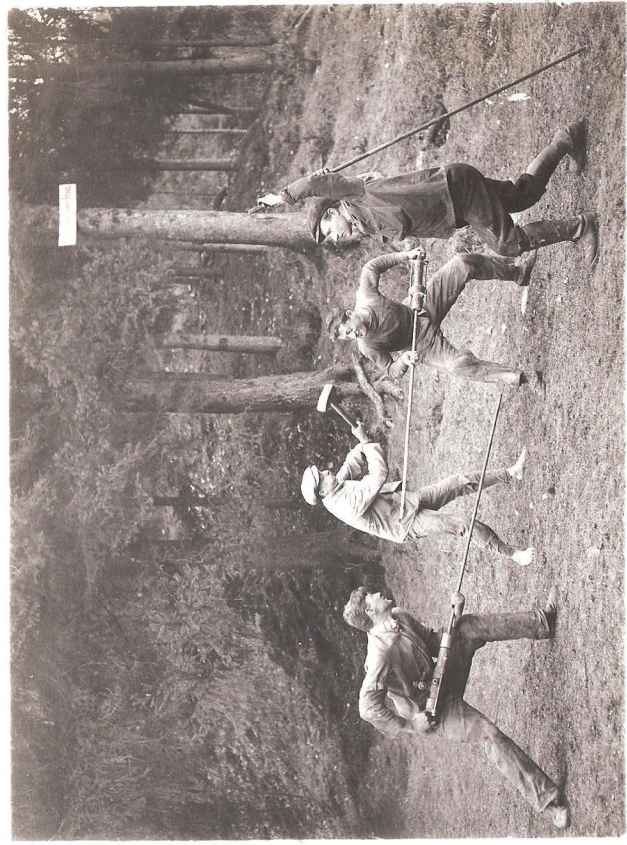


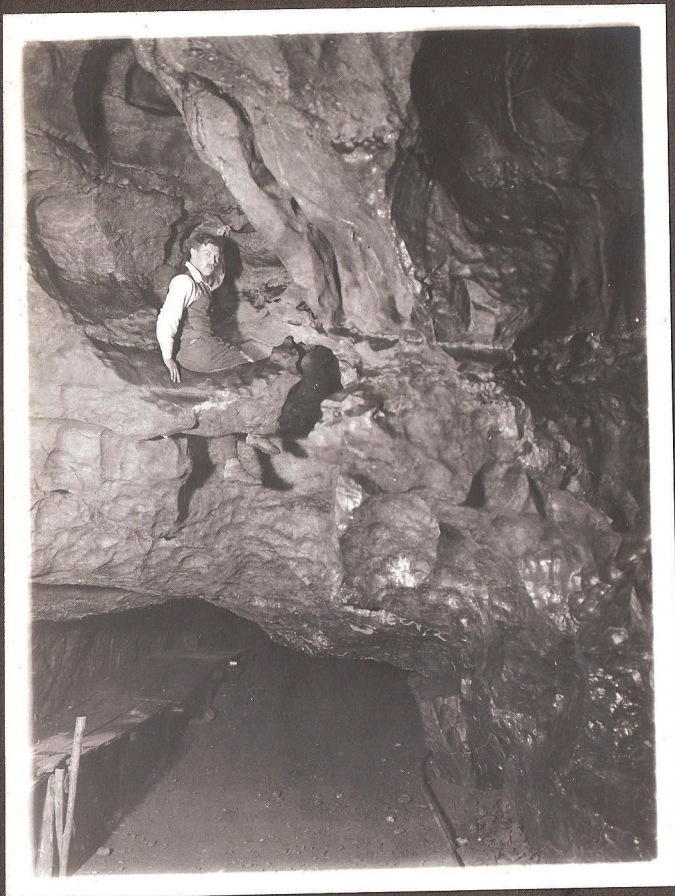
záběry z postupu Šenkovým síf.
po neúspěšných potápěčských po-
kusech
instalace konzol el. vedení

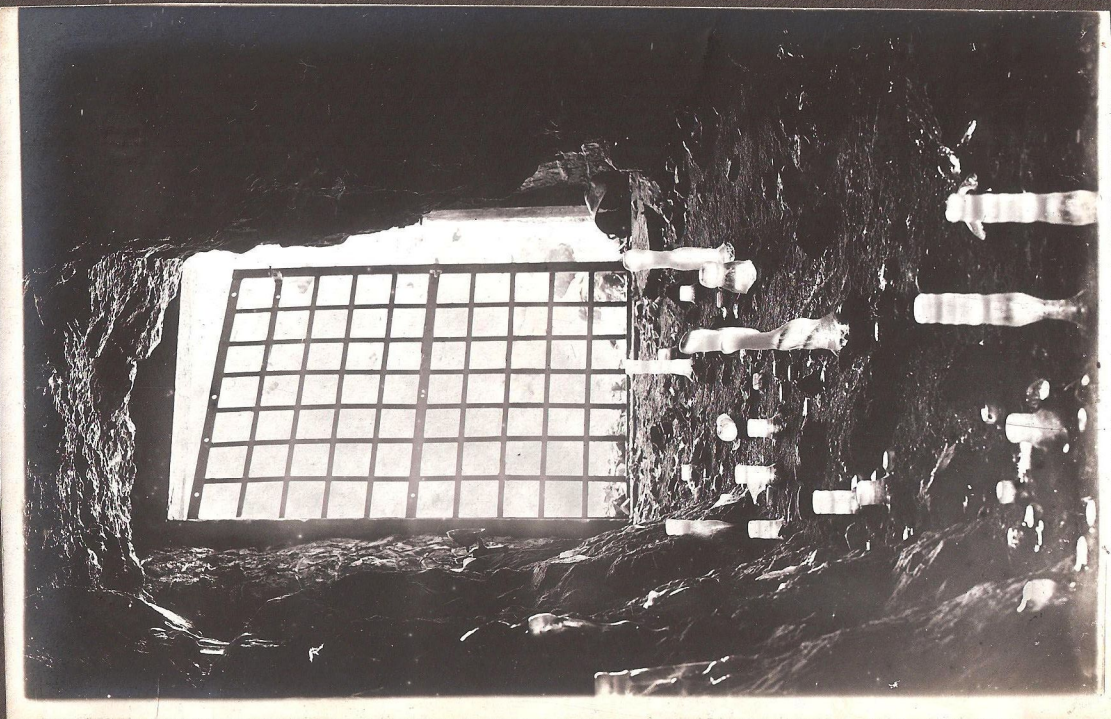
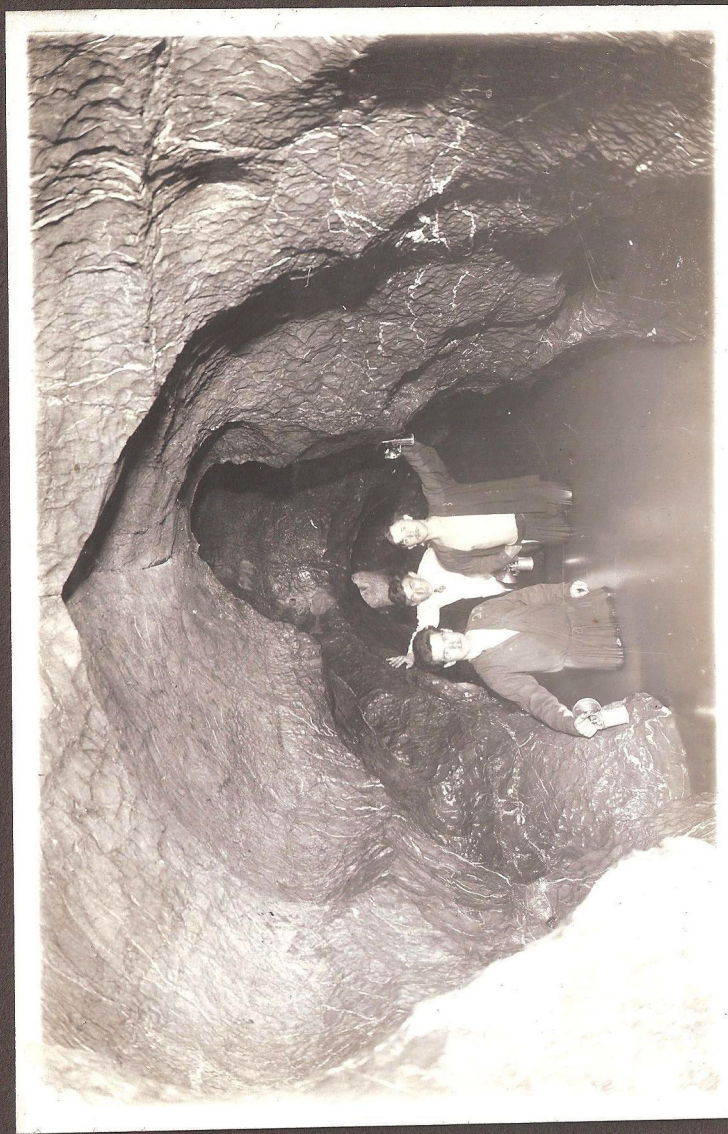


Karel Böhler

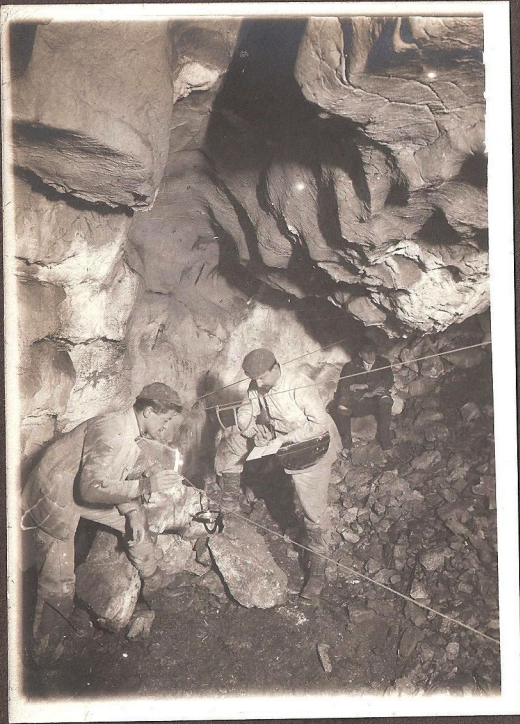
vrtací práce v Šenkově sifonu
nová strojovna v Předšíni



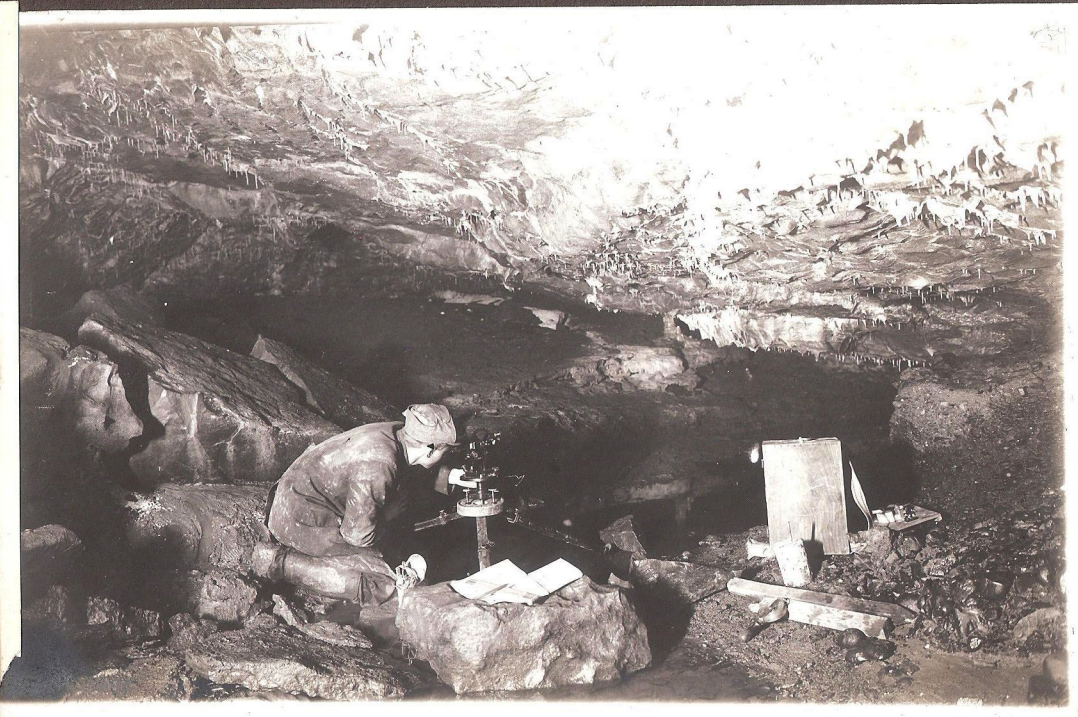


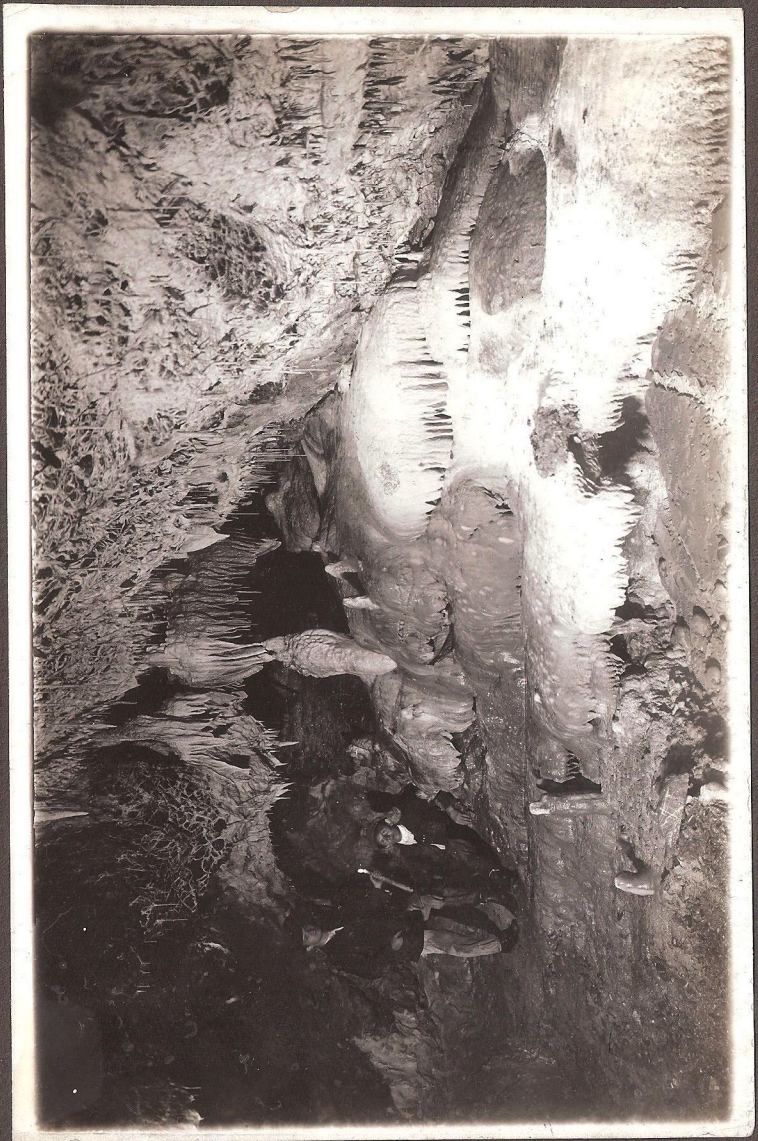


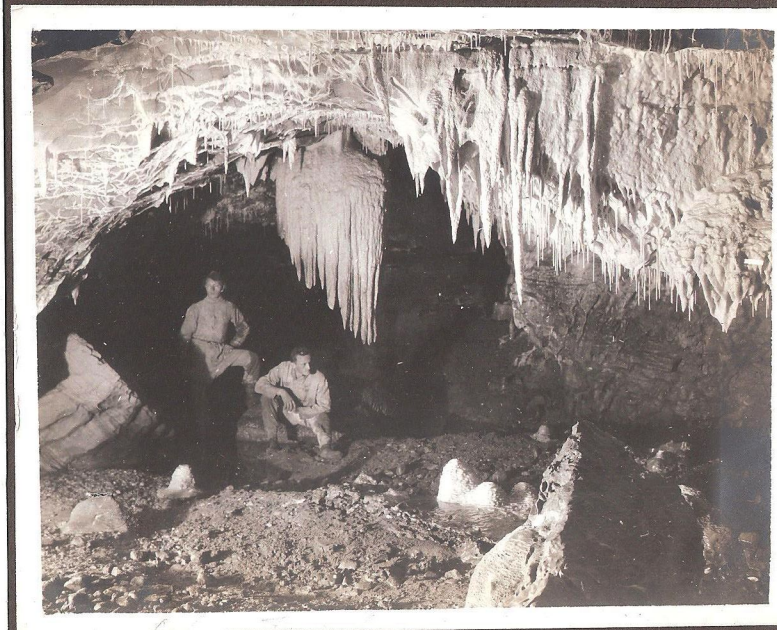
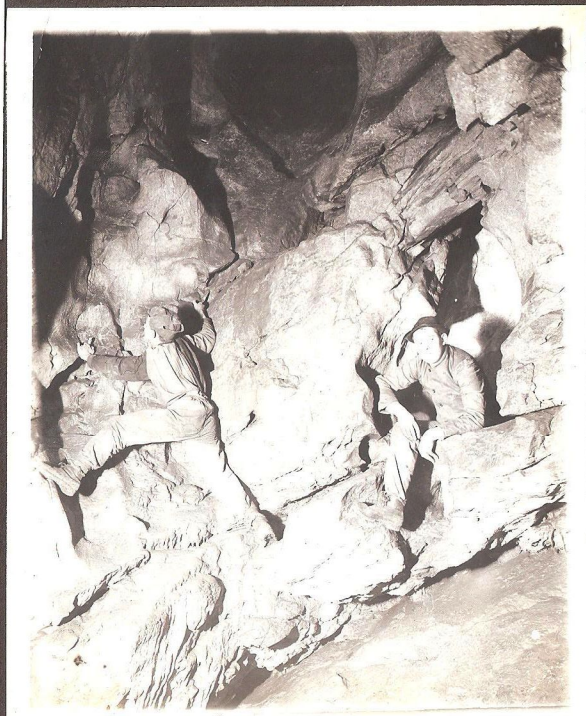
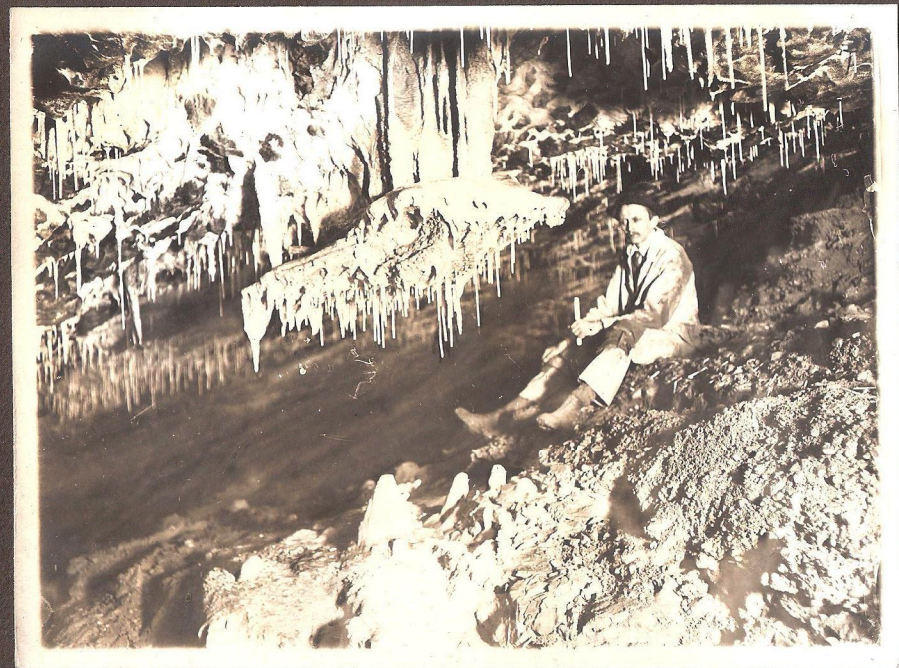
Ochozská jeskyně

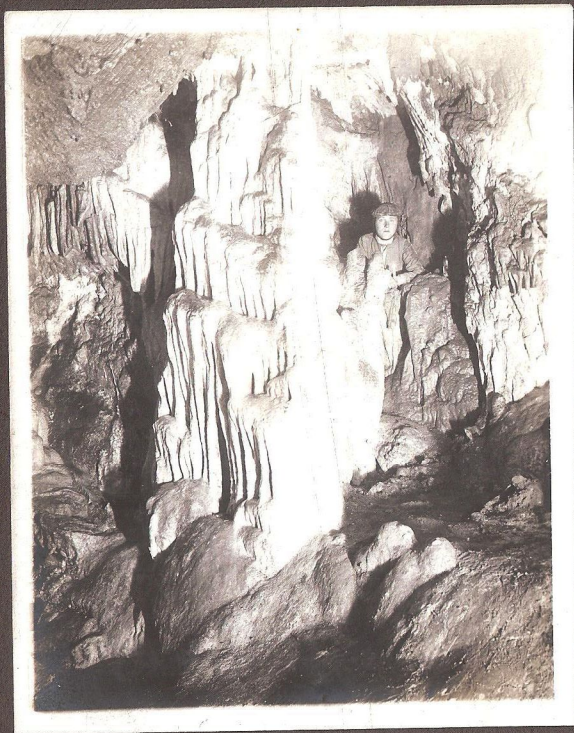
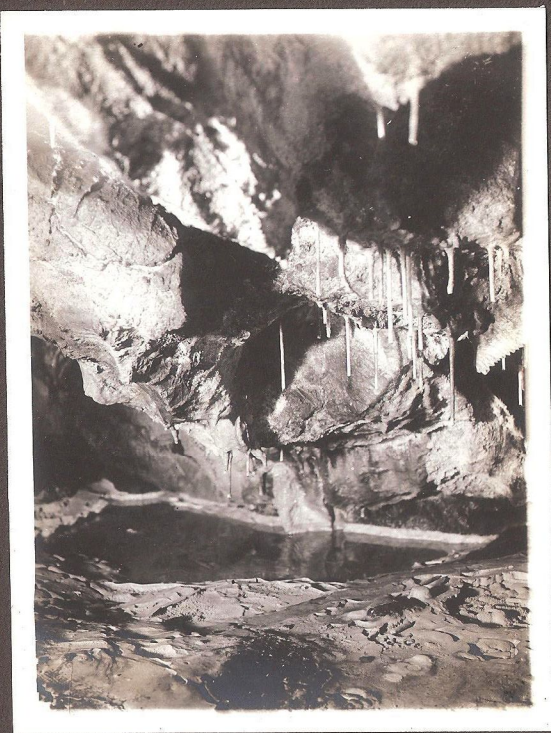
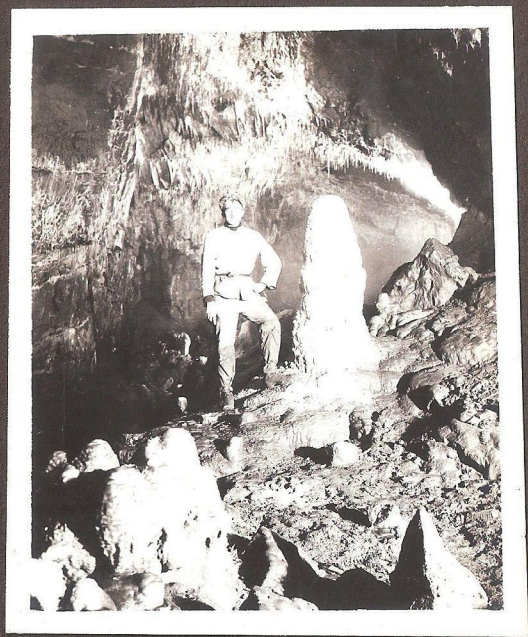


L. Talbot, Idaho



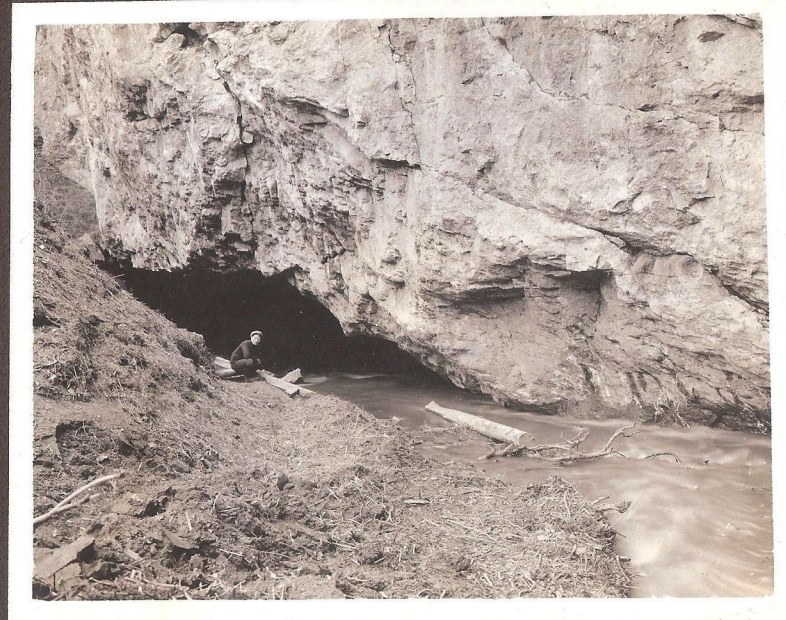




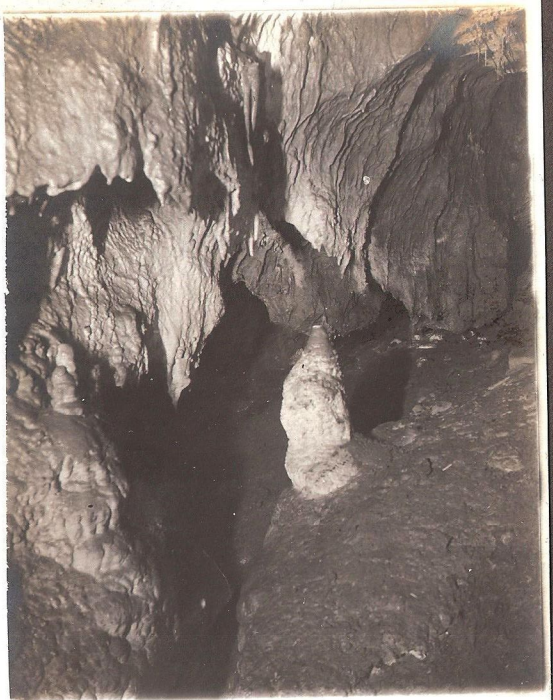




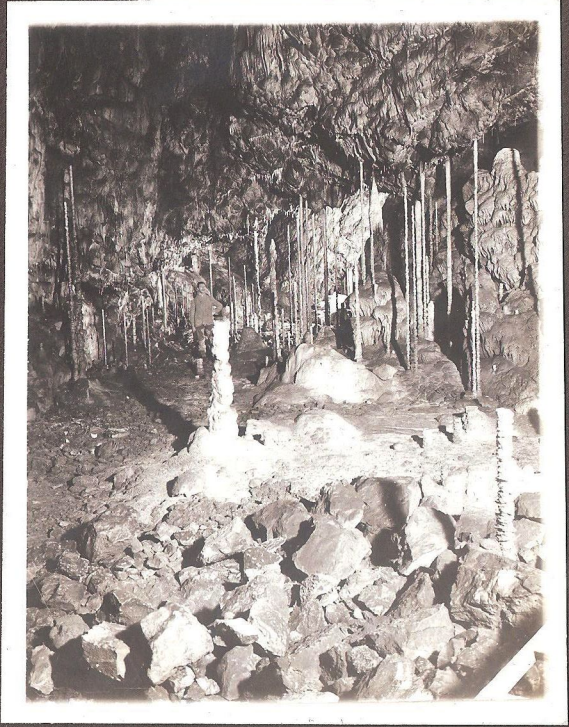
Rudice



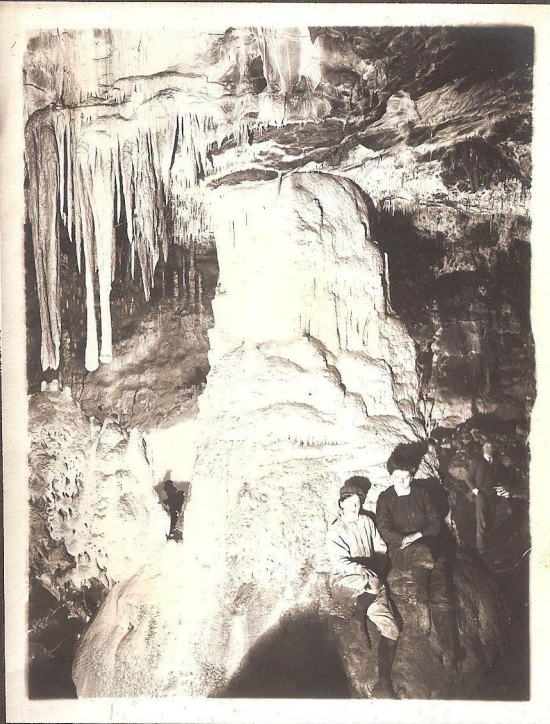
Sloupské jeskyně



Mariánská jeskyně



Kateřinská jeskyně



Kateřinská jeskyně



Nová Rasovna



Hostěnické propadání



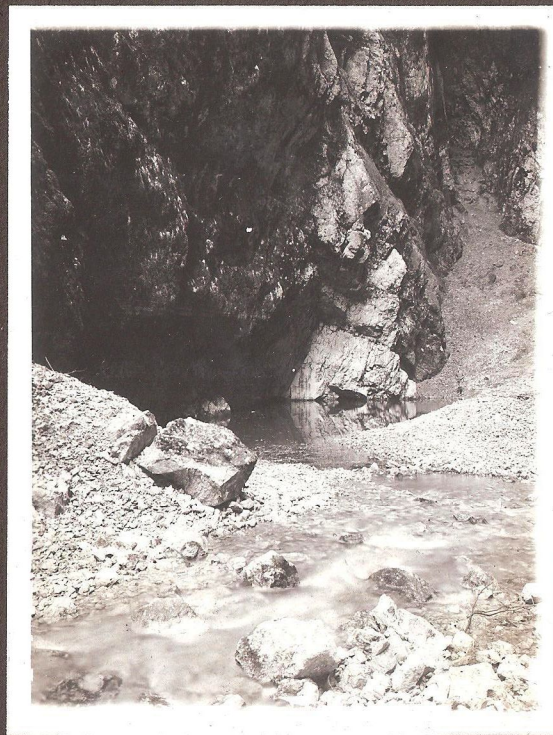
Rasovna



neznámý portál



vývěr Punkvy



záběry z 5. expedice
do Macochy r. 1909

